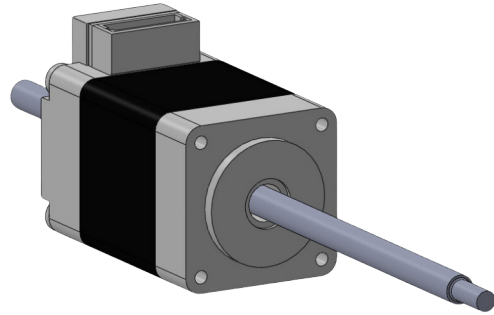


## LAST2033□-OR200-LS03.501xxxS

推力 : 46 N

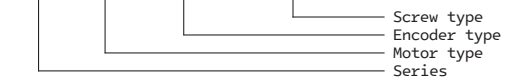
連續移動速度 : 40 mm/s



LAST 2033□- OR200- LS03.501xxxS

兩相式貫通步進馬達，於其內部結構安裝螺母  
 搭配螺桿直驅致動器的效果，安裝結構單純簡單  
 方便使用，給在極限空間內另一種解決方案

另可選配編碼器

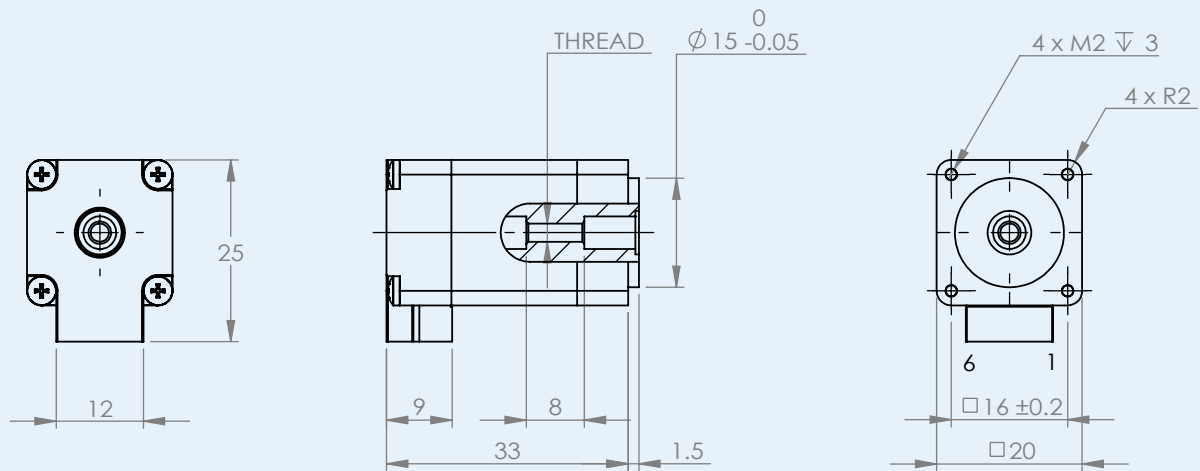


### Technical Specification

Nominal voltage	24	V
Nominal current	0.6	A
Terminal resistance	6.4	Ω
Leadscrew diameter	M3.5	mm
Leadscrew pitch	1	mm
Leadscrew length	customized	mm
Operation temperature range	-20 ... +50	°C
Force	46	N
Continuous output speed, max	40	mm/s
Step angle (full step)	1.8	°
Motor type	two phase stepper motor	

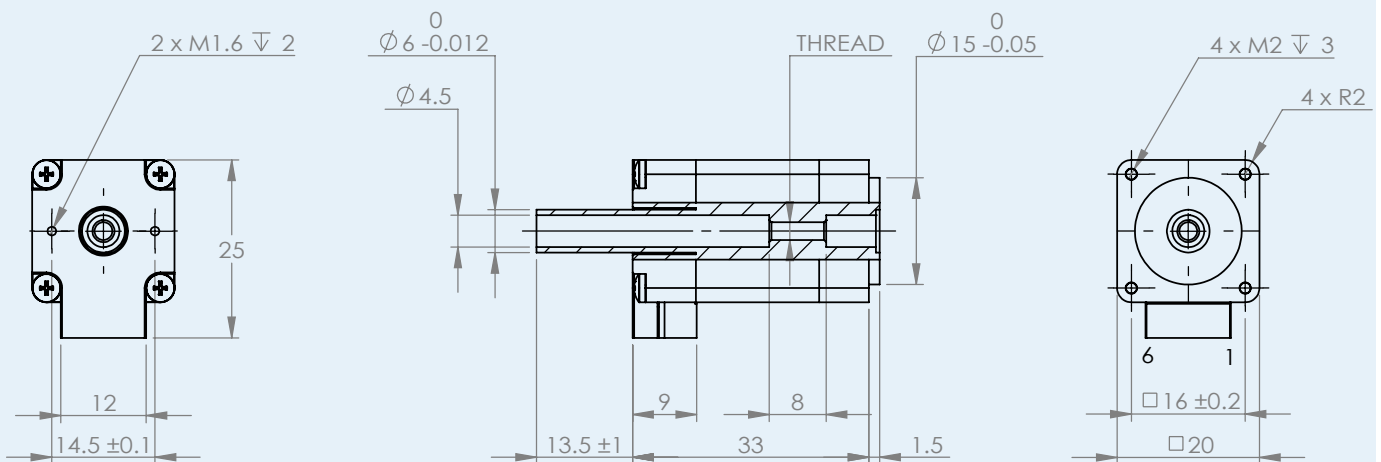
## Dimensional drawing (LAST2033A-OR200-LS03.501xxxS)

Scale reduced mm



## Dimensional drawing (LAST2033B-OR200-LS03.501xxxS)

Scale reduced mm



### Motor Pin Assignment

Motor Connector Type : JST B6B-ZR

Wire Connector Types : JST ZH6-6 (AWG26)

Pin	Color	Assignment
Pin 1	Black	A+
Pin 2	N.C.	N.C.
Pin 3	Green	A-
Pin 4	Red	B+
Pin 5	N.C.	N.C.
Pin 6	Blue	B-

### Option

Encoder

Cable

0.5 m  
1.5 m